



## BAXTON

Public Events, Critical Infrastructure and Perimeter Security all Share a common challenge. "The cost and complexity of building the Network and Power infrastructure to all needed locations. Public events that last only a few days, magnify this problem.

BTU Research's **BAXTON** solves the Problem.

Rapid Deployment of emergency communications and surveillance is now possible by virtue of a portable, mobile, compact source of remote PoE technology that operates without grid or connected power and without a hard network connection. **BAXTON** was conceived to be an idea to do whatever the end user desires. For surveillance requirements, **BAXTON** offers A VARIETY OF Axis cameras wireless communication to broadcast from **BAXTON** to multiple locations.

It's ideal for:

- Critical Infrastructure
- Smart Cities
- Transportation
- Utilities
- Oil & Gas
- Prisons and corrections
- Aviation
- Stadiums

The device is easily transportable and is installed in minutes. The perfect solution to rapidly establish surveillance in emergencies where power is unavailable.



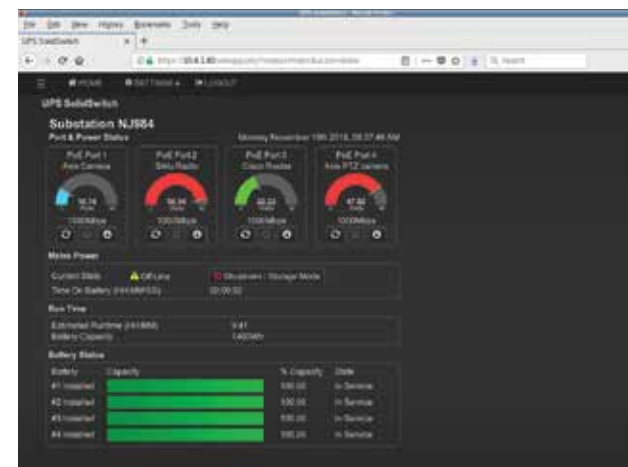
Travel Case Included  
Dimensions - 29" x 22" x 16" with wheels



Side bullet cameras are shielded with custom designed aluminum covers



UPS SolidSwitch Extended with 1400 Whrs of Runtime



**BAXTON** can also be configured to provide a ruggedized solution to rapidly deploy a resilient network, able to relay transmissions via the best available traffic path and frequency in real-time and can establish this network in a area that has lost all power and communications. The system is designed to work for days, building and expanding core mesh infrastructure that allows continuous communications between people and assets.

At the heart of **BAXTON** is the BTU Research **INTEPO UPS SolidSwitch**, powered through an AC connection, Solar, Wind or it's 1400WH of Li-Ion PowerPak. The **SolidSwitch Command Post** provides the user with complete remote intelligent power manageability.

## BUY THE KITTED SOLUTION VS. ASSEMBLY

How long would it take you to assemble the following?

- Axis Cameras
- Camera mounting Hardware
- Industrial L3 PoE Switch
- Surge Protection
- UPS Battery Management System
- Back-up Batteries
- LTE or 802.11 Wireless Comms
- Travel Case
- Patch Panel
- Switch Mounting hardware
- NEMA-4X Rated Enclosure
- Cost to Buy and install this solution?

~ VERSUS ~

### BAXTON

- No Assembly required
- Installs in under 30 Minutes
- You do the math!!!!
- Replaces Security Trailers!



## BTU RESEARCH HAS PARTNERED WITH AXIS COMMUNICATIONS

Offering a variety of cameras we can Kit with **BAXTON** unlocks greater user experiences and Axis features directly in Milestone Xprotect AXIS Optimizer is an application that optimizes the performance of Axis devices in Milestone XProtect. It unlocks great user experiences and Axis features directly in Milestone XProtect by ensuring that administrators and operators have access to a multitude of capabilities when running Axis devices on Milestone XProtect. We can assemble with most cameras if we have the mechanical drawings.

### AXIS P3367-V Network Camera

5-megapixel, light-sensitive with remote focus and zoom

- HDTV 1080p/5 MP
- P-Iris control
- Remote zoom and focus
- I/O ports and two-way audio
- IK10 vandal-resistance



### AXIS Q6215-LE PTZ Network Camera

Heavy-duty PTZ camera with OptimizedIR

- HDTV 1080p with 30x zoom
- Long-range OptimizedIR
- MIL-STD-810G compliant
- AXIS Guard Suite analytics
- Zipstream, Lightfinder, and WDR



### AXIS P1455-LE Network Camera

Versatile, feature-rich 2 MP surveillance

- Lightfinder 2.0 and Forensic WDR
- OptimizedIR
- AXIS Object Analytics
- Enhanced security features
- Two lens alternatives



## WATERPROOF TRAVEL CASE

### MODEL: 3I-2922-16BE

The **3I-2922-16BE Pro Audio Utility Case** measures an impressive 29" Long x 22" Wide x 16" Deep, is molded of ultra high-strength polypropylene copolymer resin, and features a gasketed, water and dust tight, submersible design (IP67) that is resistant to corrosion and impact damage, and an automatic ambient pressure equalization valve (MIL-STD-648C) to assist with moisture control.

This iSeries size is another new size that is being produced on SKB's Energy Saving Hydraulic Toggle Injection Molding System at SKB's manufacturing facility in Orange, California. This injection system is one of the largest and most efficient injection molding systems in the United States.

The 3I-2922-16 Pro Audio Utility Case also features three protected hinges with stainless steel pins to provide lid stability, SKB's "trigger release" latch system can be retrofitted with TSA recognized and accepted locks, an oversized double grip carrying handle to balance a heavy load, and comfortable Oversized snap-down rubber over-molded cushion grip handles on each end for a two person carry or transport. The heavy-duty oversized handle and wide set double wheels offer the perfect solution to comfortable transport of pro audio equipment, cables, hardware, drums or drum accessories.

### FEATURES

- Oversized heavy-duty handles and wide-set double wheels
- Ultra high-strength polypropylene copolymer resin
- UV, solvent, corrosion and fungus resistant (MIL-STD-810F)
- Complete gasket seal makes these cases absolutely watertight (MIL-STD-C-4150J)
- Automatic ambient pressure equalization valve (MIL-STD-648C & IP67)
- Resistant to corrosion and impact damage
- Molded-in hinges
- Patented "trigger release" Locking Latch system
- TSA recognized and accepted locks can be retrofitted
- Stainless steel locking loops for customer supplied lock

### SPECIFICATIONS

Interior Length	29.00 in	73.66 cm
Interior Width	22.00 in	55.88 cm
Interior Depth	16.00 in	40.64 cm
Exterior Length	32.00 in	81.28 cm
Exterior Width	24.75 in	62.87 cm
Exterior Depth	16.88 in	42.86 cm
Lid Depth	2.00 in	5.08 cm
Base Depth	14.00 in	35.56 cm
Shipping Weight	32.00 lb	14.51 kg
Product Weight	28.25 lb	12.81 kg